

NEW



XGS-1208SE

8 x GbE RJ45 + 12 x 10G SFP+
L2+ Managed Ethernet Switch with SyncE

CTC Union Technologies unveils a brand-new product that enables 10Gbps speed for fiber Ethernet interfaces. The XGS-1208SE is designed to enable applications for 4G/5G mobile backhaul network or core switching and connection in the network of smart factory automation. It is equipped with 8 ports GbE RJ45 and 12 ports 10G SFP+ slot with high performance switching and wire speed connectivity to boost the connection efficiency as well as capability of delivering time sensitive applications.

The XGS-1208SE features robust L2 switching functionality such as VLAN, port trunking, QoS, span tree protocol and IGMP multicast service. The hard-wired based ACL enables secure network access and traffic transportation that network administrators desire, reducing the risks of unauthorized or illegal intruders. The diverse management via Web GUI, SSH and SNMP, offer friendly and ease-to-use interfaces, as well as secured remote management with traffic encryption. Every Ethernet copper or fiber port on XGS-1208SE except management port can be configured to deliver the timestamp messages of SyncE or IEEE 1588v2 inside Ethernet packets for the precision timing purposes of mobile backhaul or smart factory automation network.

XGS-1208SE has built-in 1PPS input and output SMA connectors. The output SMA interface supports the waveform measurement of IEEE 1588v2 via external instrument, as well, the input SMA interface may be connected to external time source as the reference clock for the network.

Specifications

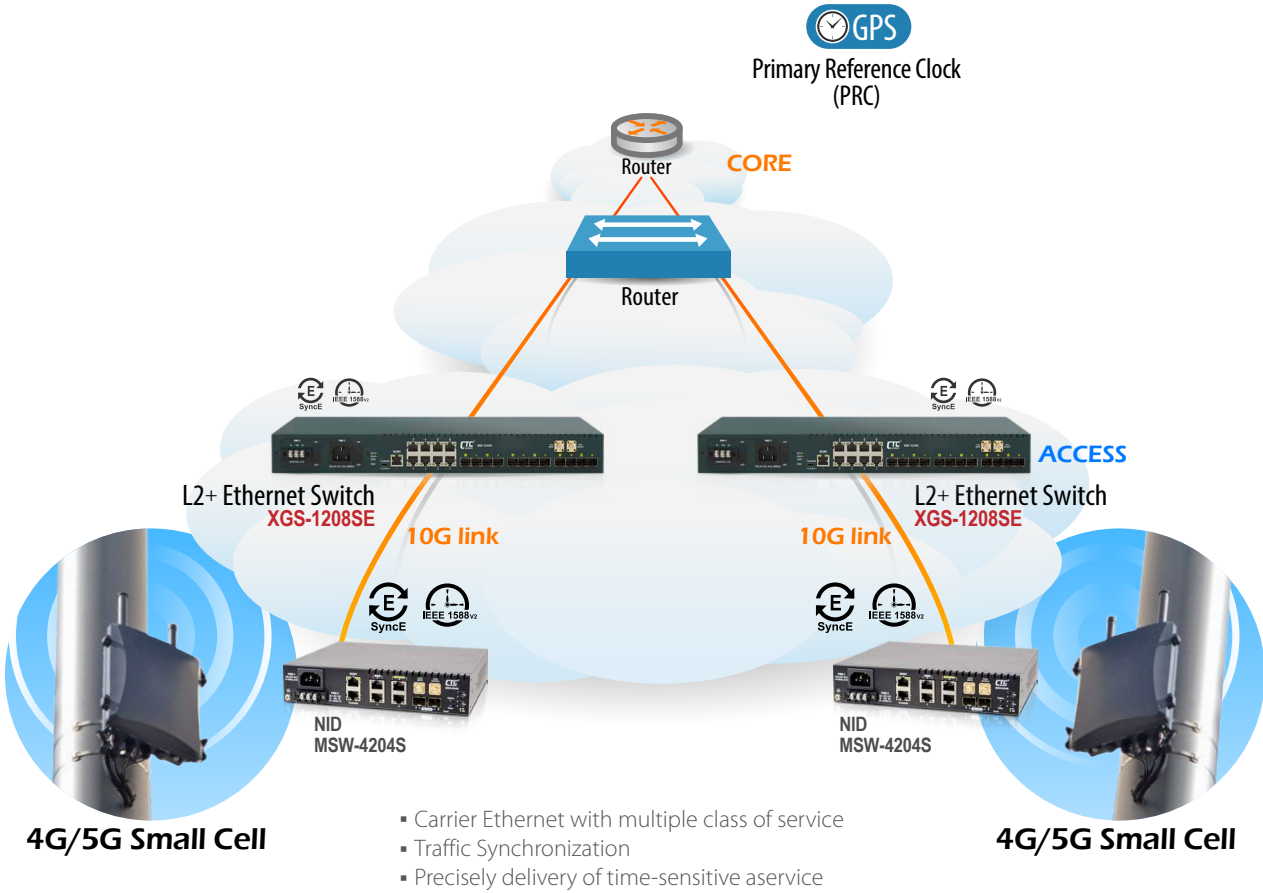
Interface	Fiber port: 10G SFP+ *12 Copper port: 10/100/1000Mbps RJ45*8 1PPS port: SMA connector*2 (input/output) Console port: RS-232 in USB type C	Security	Static port security (MAC based) Per port limited MAC learning Port based/MAC base/single/multiple IEEE 802.1x access control 512 ACL rules based on L2~L4 information RADIUS/TACACS+ authentication HTTPs & SSH v2 IP/MAC binding IP source guard & ARP inspection
Packet forwarding rate	14880pps @10Mbps 148800pps @100Mbps 1488000pps @1000Mbps 14880000pps @10Gbps	IP Multicasting	IGMP snooping v1/v2/v3, IGMP proxy reporting MLD snooping v1/v2 IGMP fast leave IGMP query IGMP filtering/throttling MVR (Multicast VLAN Registration)
Switching Fabric Capacity	256Gbps	SyncE	ITU-T G.8261/G.8262/G.8264 on all Ethernet interfaces Sync status message support
Transmission method	Store and Forward Switching	PTP	ITU-T G.8263 slave clock ITU-T G.8273.2 boundary clock ITU-T G.8273.4 transparent clock ITU-T G.8265.1/G.8275.1 telecom profile (option)
Packet buffer	32M bits	Management	WebGUI/Telnet CLI interface SNMP v1/v2c/v3 RMON I (1,2,3,9 groups) & RFC1213 MIB II DHCP client/relay/snooping/relay option 82 TFTP/HTTP based firmware and configuration upgrade Port mirroring RSPAN Event syslog server DNS client/proxy NTP client UPnP IPv4/IPv6 management SFF-8472 DDMI IEEE 802.1ab LLDP
MAC table size	32K		
Jumbo frame size	10K Bytes		
VLAN feature	IEEE 802.1Q tagged VLAN (4K VLAN groups) IEEE 802.1ad QinQ VLAN Voice VLAN; MAC based VLAN; Protocol based VLAN; IP subnet based VLAN Private VLAN for port isolation; VLAN translation		
Link aggregation	Static trunk (SA, DA, IP, TCP/UDP port) IEEE 802.3ad LACP, IEEE 802.1AX, 8 port Max. per LACP trunk, 10 LACP trunk groups Max		
L2 switching protection	IEEE 802.1D STP/IEEE 802.1w RSTP/IEEE 802.1s MSTP Loop Protection		
QoS feature	Hard wired IEEE 802.1p 8 priority queues per port Traffic scheduling based on strict/WRR priority CoS based traffic classification on switch port, VLAN ID, DSCP, TCP/UDP port IEEE 802.1p priority tag remarking; DSCP remarking Per Port/Queue based ingress/egress rate limit in steps of 100kbps IEEE 802.3x flow control IEEE 802.1Qbb priority based full-duplex flow control Multicast/Broadcast/Unicast storm control with flooding control		

2

L2+ Managed Ethernet Switch with SyncE XGS-1208SE

Application

10G Managed Ethernet Switch with SyncE



Ordering Information

Model Name	Description
XGS-1208SE-AC	8x GbE RJ45 + 12x 10G SFP+ slots L2+ Managed Ethernet Switch with SyncE built-in single AC power supply
XGS-1208SE-DC	8x GbE RJ45 + 12x 10G SFP+ slots L2+ Managed Ethernet Switch with SyncE built-in single DC power supply (-48V)
XGS-1208SE-AA	8x GbE RJ45 + 12x 10G SFP+ slots L2+ Managed Ethernet Switch with SyncE built-in dual AC power supply
XGS-1208SE-DD	8x GbE RJ45 + 12x 10G SFP+ slots L2+ Managed Ethernet Switch with SyncE built-in dual DC power supply (-48V)
XGS-1208SE-AD	8x GbE RJ45 + 12x 10G SFP+ slots L2+ Managed Ethernet Switch with SyncE built-in AC + DC power supply

2

L2+ Managed Ethernet Switch with SyncE XGS-1208SE