

MOMB series

Outdoor metal fiber optic box, IP66

Description :

The OPTOKON MOMB metal box is designed for optical fiber cables termination outdoors. It is an IP66 design that resists moisture and dust entry. A single door box with lock is provided. Provision for up to 4 optical fiber cables to enter or leave the enclosure through weatherproof cable glands is provided. Four cable anchoring points are provided. The MOMB includes a set of individually removable splice trays according to the customer request; each tray can accept 12 fusion splices. The splice tray stack is secured by a long length hook and loop tie. The housing contains standard CNPM coupling panels with connector adaptors of all most industry used standards.



Features:

- Easy installation – fully removable base
- Compact FTTH design
- Designed to house SC, SC duplex, ST, FC, E2000, LC, MT-RJ couplings
- Metal wires and FO hybrid version available
- Pigtail cable entry available
- Wide range of cable size entry
- Pole mount accessories on request
- Inside fiber bending with observance of diameters, fiber reserve provided.

Specification:

| PART NUMBER | FIBER CAPACITY ¹ | CASSETTE NUMBER | DIMENSIONS (H x W x D) mm | SHIP WGT (kg) |
|---------------|-----------------------------|-----------------|---------------------------|---------------|
| MOMB-1 | up to 12 fibers | 1 | 300 x 200 x 155 | 4.5 |
| MOMB-2 | up to 120 fibers | up to 10 | 400 x 300 x 210 | 8.0 |

Note: 1) Capacity mentioned for SIMPLEX adaptors, standard heat shrink tubes

| | |
|--------------------------|----------------------------------|
| Environmental protection | IP66 |
| Material | Sheet steel |
| Color | RAL7035 |
| Lock | Standard: double-bit lock insert |

Standard accessories:

Main body + bottom cable panel + cable glands²
 Lock
 Splice cassettes (according to fiber number)
 Splice protection sleeves (according to fiber number)
 Coupling adaptors (according to order)
 Cable holders

Options:

Glass door
 Pole mount accessories
 Roof against the rain
 Inner mounting rails
 Grounding kit
 Door stop
 Pocket for documents
 other on request

Note: 2) Standard cable input
2x PG13.5 Ø cable 5.5-12 mm
1x PG21 Ø cable 8.5-14 mm
Customer solution on request



Ordering Code:

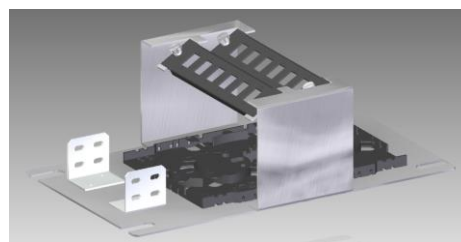
| | | | | | | | |
|----------------------|-------------|---------------------------------------|------------|--|-------------|--|-----------|
| MOMB-XX | | - | XX | - | XX X | - | XX |
| Version | | Fiber Capacity | | X - Fiber Termination Option | | | |
| MOMB-1 | | 01-120 fibers | | C Splice Cassette for 12 Splicing | | | |
| MOMB-2 | | X - Number of Splice Cassettes | | | | 1-10 Number of Splice Cassettes | |
| Coupling Type | | | | | | | |
| ST | ST | M | Multimode | | | | |
| SC | SC | S | Singlemode | | | | |
| FC | FC | A | APC | | | | |
| E2 | LSH (E2000) | | | | | | |
| DSC | Duplex SC | | | | | | |
| DLC | Duplex LC | | | | | | |
| MU | MU | | | | | | |
| MJ | MT-RJ | | | | | | |



Roof against rain



Pole mount accessories



Innner equipment detail MOMB-1